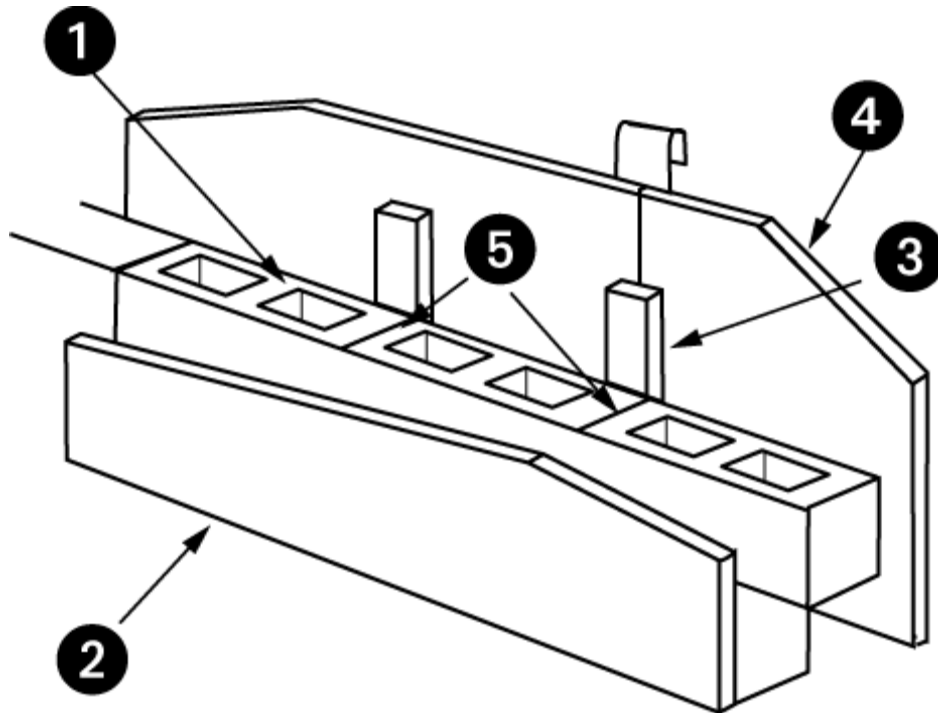


3-Hour Fire Rating

6" C.M.U.

Fire Rating: 3 Hour

No. 6-3-910330SD



Assembly Information

1. Preferred product 910330 c.m.u. 6" x 8" x 16" nominal
2. Portland cement stucco - 1/2" thick applied directly to C.M.U.
3. Wood or steel furring members - 16" o.c. maximum.
4. Gypsum wallboard - Type "X", 5/8" thick, long dimension parallel to furring members - all joints finished.
5. ASTM C-270 Masonry Mortar, Type M or S. Face shell or full mortar bedding as required.
6. Masonry grout, reinforcing steel, joint reinforcement, anchors, ties and accessories (Not depicted above - optional). Use where specified.

Preferred Materials Inc. accepts no responsibility for proper application of the rated wall assembly above, or responsibility for the construction of such assemblies.

Fire Rating: 3 Hour No. 6-3-910330SD

Concrete Masonry Unit

Section 721.3.2 of the Florida Building Code

Unit Description	Size WxHxL Nominal	Equivalent Thickness Inches	Fire Rating Minutes
910330	6x8x16	4.1	120.5*

** Linear interpolation from Table 721.3.2 of the Florida Building Code for Exposed Finish Block Mix – 55% limestone & 45% siliceous aggregates.*

Section 721.3.1.3 and 721.3.1.4 of the Florida Building Code

Solid Grouted construction and/or cells filled with loose-fill materials

Included	Equivalent Thickness Inches	Fire Rating Minutes
No	4.1	120.5*
Yes	N/A	N/A

** Linear interpolation from Table 721.3.2 of the Florida Building Code for Exposed Finish Block Mix – 55% limestone & 45% siliceous aggregates.*

Fire Rating: 3 Hour No. 6-3-910330SD

Nonfire-exposed side

Side 1

Section 721.3.2.1 of the Florida Building Code

Finish	
½ inch thick Portland cement-sand Stucco	0.5
Multiplying factor Table 721.2.1.4(1)	1
Adjusted Thickness	0.5
Concrete Masonry Unit	
Unit Description	910330
Size WxHxL Nominal	6x8x16
Equivalent Thickness	4.1
Fire Rating Minutes	120.5
Total Thickness, CMU + Finish	4.6
Fire Resistance Rating of CMU & Finish, Table 721.3.2	147.6*

** Linear interpolation from Table 721.3.2 of the Florida Building Code for Exposed Finish Block Mix – 55% limestone & 45% siliceous aggregates.*

Side 2

Section 721.3.2.1 of the Florida Building Code

Finish	
5/8 inch thick Gypsum Wallboard Type X	.625
Multiplying factor Table 721.2.1.4(1)	1
Adjusted Thickness (inches)	.625
Concrete Masonry Unit	
Unit Description	910330
Size WxHxL Nominal	6x8x16
Equivalent Thickness (inches)	4.1
Fire Rating Minutes	120.5
Total Thickness, CMU + Finish (inches)	4.72
Fire Resistance Rating of CMU & Finish, Table 721.3.2	154.8*

** Linear interpolation from Table 721.3.2 of the Florida Building Code for Exposed Finish Block Mix – 55% limestone & 45% siliceous aggregates.*

Fire Rating: 3 Hour No. 6-3-910330SD

Fire-exposed side

Side 1

Section 721.3.2.2 of the Florida Building Code

Finish	
5/8 inch thick Gypsum Wallboard Type X	
Time assigned to finish materials Table 721.2.1.4(2)	40
Fire Resistance of CMU and Nonfire-exposed side Finish Table 721.3.2	147.6
Assembly Fire-Resistance Rating	187.6
Max. allowable assembly Fire Resistance Block + finishes	241
Total Assembly Fire-Resistance Rating	187.6

Side 2

Section 721.3.2.2 of the Florida Building Code

Finish	
½ inch thick Portland cement-sand Stucco	
Time assigned to finish materials Table 721.2.1.4(2)	0 0.5
Fire Resistance of CMU and Nonfire-exposed side Finish Table 721.3.2	0 4.72
Assembly Fire-Resistance Rating	186 5.22
Max. allowable assembly Fire Resistance Block + finishes	241
Total Assembly Fire-Resistance Rating	186

Assembly Fire-Resistance Rating	186 Minutes
--	--------------------

**Fire Resistance Rating, minutes per inches of equivalent thickness
Linear Interpolation from table 721.3.2 of the 2007 Florida Building Code
Exposed Finish Block Mix – 55% Limestone & 45% Siliceous Aggregates**

1.95	30.0	2.36	45.4	2.77	60.8	3.18	76.3	3.59	95.0	4.00	115.5	4.41	136.2	4.82	160.8	5.23	186.8	5.64	210.0
1.96	30.4	2.37	45.8	2.78	61.1	3.19	76.8	3.60	95.5	4.01	116.0	4.42	136.8	4.83	161.4	5.24	187.5	5.65	210.8
1.97	30.8	2.38	46.1	2.79	61.5	3.20	77.2	3.61	96.0	4.02	116.5	4.43	137.4	4.84	162.0	5.25	188.3	5.66	211.5
1.98	31.1	2.39	46.5	2.80	61.9	3.21	77.6	3.62	96.5	4.03	117.0	4.44	138.0	4.85	162.6	5.26	189.0	5.67	212.3
1.99	31.5	2.40	46.9	2.81	62.3	3.22	78.1	3.63	97.0	4.04	117.5	4.45	138.6	4.86	163.2	5.27	189.8	5.68	213.0
2.00	31.9	2.41	47.3	2.82	62.6	3.23	78.5	3.64	97.5	4.05	118.0	4.46	139.2	4.87	163.8	5.28	190.5	5.69	213.8
2.01	32.3	2.42	47.6	2.83	63.0	3.24	79.0	3.65	98.0	4.06	118.5	4.47	139.8	4.88	164.4	5.29	191.3	5.70	214.5
2.02	32.6	2.43	48.0	2.84	63.4	3.25	79.4	3.66	98.5	4.07	119.0	4.48	140.4	4.89	165.0	5.30	192.0	5.71	215.3
2.03	33.0	2.44	48.4	2.85	63.7	3.26	79.9	3.67	99.0	4.08	119.5	4.49	141.0	4.90	165.6	5.31	192.8	5.72	216.0
2.04	33.4	2.45	48.7	2.86	64.1	3.27	80.3	3.68	99.5	4.09	120.0	4.50	141.6	4.91	166.2	5.32	193.5	5.73	216.8
2.05	33.8	2.46	49.1	2.87	64.5	3.28	80.7	3.69	100.0	4.10	120.5	4.51	142.2	4.92	166.8	5.33	194.3	5.74	217.5
2.06	34.1	2.47	49.5	2.88	64.9	3.29	81.2	3.70	100.5	4.11	121.0	4.52	142.8	4.93	167.4	5.34	195.0	5.75	218.3
2.07	34.5	2.48	49.9	2.89	65.2	3.30	81.6	3.71	101.0	4.12	121.5	4.53	143.4	4.94	168.0	5.35	195.5	5.76	219.0
2.08	34.9	2.49	50.2	2.90	65.6	3.31	82.1	3.72	101.5	4.13	122.0	4.54	144.0	4.95	168.6	5.36	196.0	5.77	219.8
2.09	35.2	2.50	50.6	2.91	66.0	3.32	82.5	3.73	102.0	4.14	122.5	4.55	144.6	4.96	169.2	5.37	196.5	5.78	220.5
2.10	35.6	2.51	51.0	2.92	66.4	3.33	82.9	3.74	102.5	4.15	123.0	4.56	145.2	4.97	169.8	5.38	197.0	5.79	221.3
2.11	36.0	2.52	51.4	2.93	66.7	3.34	83.4	3.75	103.0	4.16	123.5	4.57	145.8	4.98	170.4	5.39	197.5	5.80	222.0
2.12	36.4	2.53	51.7	2.94	67.1	3.35	83.8	3.76	103.5	4.17	124.0	4.58	146.4	4.99	171.0	5.40	198.0	5.81	222.8
2.13	36.7	2.54	52.1	2.95	67.5	3.36	84.3	3.77	104.0	4.18	124.5	4.59	147.0	5.00	171.6	5.41	198.5	5.82	223.5
2.14	37.1	2.55	52.5	2.96	67.9	3.37	84.7	3.78	104.5	4.19	125.0	4.60	147.6	5.01	172.2	5.42	199.0	5.83	224.3
2.15	37.5	2.56	52.9	2.97	68.2	3.38	85.1	3.79	105.0	4.20	125.5	4.61	148.2	5.02	172.8	5.43	199.5	5.84	225.0
2.16	37.9	2.57	53.2	2.98	68.6	3.39	85.6	3.80	105.5	4.21	126.0	4.62	148.8	5.03	173.4	5.44	200.0	5.85	225.8
2.17	38.2	2.58	53.6	2.99	69.0	3.40	86.0	3.81	106.0	4.22	126.5	4.63	149.4	5.04	174.0	5.45	200.5	5.86	226.5
2.18	38.6	2.59	54.0	3.00	69.4	3.41	86.5	3.82	106.5	4.23	127.0	4.64	150.0	5.05	174.6	5.46	201.0	5.87	227.3
2.19	39.0	2.60	54.4	3.01	69.7	3.42	86.9	3.83	107.0	4.24	127.5	4.65	150.6	5.06	175.2	5.47	201.5	5.88	228.0
2.20	39.4	2.61	54.7	3.02	70.1	3.43	87.3	3.84	107.5	4.25	128.0	4.66	151.2	5.07	175.8	5.48	202.0	5.89	228.8
2.21	39.7	2.62	55.1	3.03	70.5	3.44	87.8	3.85	108.0	4.26	128.5	4.67	151.8	5.08	176.4	5.49	202.5	5.90	229.5
2.22	40.1	2.63	55.5	3.04	70.9	3.45	88.2	3.86	108.5	4.27	129.0	4.68	152.4	5.09	177.0	5.50	203.0	5.91	230.3
2.23	40.5	2.64	55.9	3.05	71.2	3.46	88.7	3.87	109.0	4.28	129.5	4.69	153.0	5.10	177.6	5.51	203.5	5.92	231.0
2.24	40.9	2.65	56.2	3.06	71.6	3.47	89.1	3.88	109.5	4.29	130.0	4.70	153.6	5.11	178.2	5.52	204.0	5.93	231.8
2.25	41.2	2.66	56.6	3.07	72.0	3.48	89.6	3.89	110.0	4.30	130.5	4.71	154.2	5.12	178.8	5.53	204.5	5.94	232.5
2.26	41.6	2.67	57.0	3.08	72.4	3.49	90.0	3.90	110.5	4.31	131.0	4.72	154.8	5.13	179.4	5.54	205.0	5.95	233.3
2.27	42.0	2.68	57.4	3.09	72.7	3.50	90.5	3.91	111.0	4.32	131.5	4.73	155.4	5.14	180.0	5.55	205.5	5.96	234.0
2.28	42.4	2.69	57.7	3.10	73.1	3.51	91.0	3.92	111.5	4.33	132.0	4.74	156.0	5.15	180.8	5.56	206.0	5.97	234.8
2.29	42.7	2.70	58.1	3.11	73.5	3.52	91.5	3.93	112.0	4.34	132.5	4.75	156.6	5.16	181.5	5.57	206.5	5.98	235.5
2.30	43.1	2.71	58.5	3.12	73.9	3.53	92.0	3.94	112.5	4.35	133.0	4.76	157.2	5.17	182.3	5.58	207.0	5.99	236.3
2.31	43.5	2.72	58.9	3.13	74.2	3.54	92.5	3.95	113.0	4.36	133.5	4.77	157.8	5.18	183.0	5.59	207.5	6.00	237.0
2.32	43.9	2.73	59.2	3.14	74.6	3.55	93.0	3.96	113.5	4.37	134.0	4.78	158.4	5.19	183.8	5.60	208.0	6.01	237.8
2.33	44.2	2.74	59.6	3.15	75.0	3.56	93.5	3.97	114.0	4.38	134.5	4.79	159.0	5.20	184.5	5.61	208.5	6.02	238.5
2.34	44.6	2.75	60.0	3.16	75.4	3.57	94.0	3.98	114.5	4.39	135.0	4.80	159.6	5.21	185.3	5.62	209.0	6.03	239.3
2.35	45.0	2.76	60.4	3.17	75.9	3.58	94.5	3.99	115.0	4.40	135.6	4.81	160.2	5.22	186.0	5.63	209.5	6.04	240.0

**Fire Resistance Rating, minutes per inches of equivalent thickness
Direct Interpolation from table 721.3.2 of the 2007 Florida Building Code
Stucco/Sand Finish Block Mix – 100% Limestone**

et	min	et	min	et	min	et	min	et	min	et	min	et	min	et	min	et	min	et	min	et	min
1.90	30.0	2.31	45.4	2.72	60.8	3.13	76.5	3.54	92.0	3.95	107.5	4.36	123.0	4.77	138.5	5.18	154.0	5.59	169.5	6.00	185.0
1.91	30.4	2.32	45.8	2.73	61.1	3.14	77.0	3.55	92.5	3.96	108.0	4.37	123.5	4.78	139.0	5.19	154.5	5.60	170.0	6.01	185.5
1.92	30.8	2.33	46.1	2.74	61.5	3.15	77.5	3.56	93.0	3.97	108.5	4.38	124.0	4.79	139.5	5.20	155.0	5.61	170.5	6.02	186.0
1.93	31.1	2.34	46.5	2.75	61.9	3.16	78.0	3.57	93.5	3.98	109.0	4.39	124.5	4.80	140.0	5.21	155.5	5.62	171.0	6.03	186.5
1.94	31.5	2.35	46.9	2.76	62.3	3.17	78.5	3.58	94.0	3.99	109.5	4.40	125.0	4.81	140.5	5.22	156.0	5.63	171.5	6.04	187.0
1.95	31.9	2.36	47.3	2.77	62.6	3.18	79.0	3.59	94.5	4.00	110.0	4.41	125.5	4.82	141.0	5.23	156.5	5.64	172.0	6.05	187.5
1.96	32.3	2.37	47.6	2.78	63.0	3.19	79.5	3.60	95.0	4.01	110.5	4.42	126.0	4.83	141.5	5.24	157.0	5.65	172.5	6.06	188.0
1.97	32.6	2.38	48.0	2.79	63.4	3.20	80.0	3.61	95.5	4.02	111.0	4.43	126.5	4.84	142.0	5.25	157.5	5.66	173.0	6.07	188.5
1.98	33.0	2.39	48.4	2.80	63.7	3.21	80.5	3.62	96.0	4.03	111.5	4.44	127.0	4.85	142.5	5.26	158.0	5.67	173.5	6.08	189.0
1.99	33.4	2.40	48.8	2.81	64.1	3.22	81.0	3.63	96.5	4.04	112.0	4.45	127.5	4.86	143.0	5.27	158.5	5.68	174.0	6.09	189.5
2.00	33.8	2.41	49.1	2.82	64.5	3.23	81.5	3.64	97.0	4.05	112.5	4.46	128.0	4.87	143.5	5.28	159.0	5.69	174.5	6.10	190.0
2.01	34.1	2.42	49.5	2.83	64.9	3.24	82.0	3.65	97.5	4.06	113.0	4.47	128.5	4.88	144.0	5.29	159.5	5.70	175.0	6.11	190.5
2.02	34.5	2.43	49.9	2.84	65.2	3.25	82.5	3.66	98.0	4.07	113.5	4.48	129.0	4.89	144.5	5.30	160.0	5.71	175.5	6.12	191.0
2.03	34.9	2.44	50.3	2.85	65.6	3.26	83.0	3.67	98.5	4.08	114.0	4.49	129.5	4.90	145.0	5.31	160.5	5.72	176.0	6.13	191.5
2.04	35.3	2.45	50.6	2.86	66.0	3.27	83.5	3.68	99.0	4.09	114.5	4.50	130.0	4.91	145.5	5.32	161.0	5.73	176.5	6.14	192.0
2.05	35.6	2.46	51.0	2.87	66.4	3.28	84.0	3.69	99.5	4.10	115.0	4.51	130.5	4.92	146.0	5.33	161.5	5.74	177.0	6.15	192.5
2.06	36.0	2.47	51.4	2.88	66.7	3.29	84.5	3.70	100.0	4.11	115.5	4.52	131.0	4.93	146.5	5.34	162.0	5.75	177.5	6.16	193.0
2.07	36.4	2.48	51.7	2.89	67.1	3.30	85.0	3.71	100.5	4.12	116.0	4.53	131.5	4.94	147.0	5.35	162.5	5.76	178.0	6.17	193.5
2.08	36.7	2.49	52.1	2.90	67.5	3.31	85.5	3.72	101.0	4.13	116.5	4.54	132.0	4.95	147.5	5.36	163.0	5.77	178.5	6.18	194.0
2.09	37.1	2.50	52.5	2.91	67.9	3.32	86.0	3.73	101.5	4.14	117.0	4.55	132.5	4.96	148.0	5.37	163.5	5.78	179.0	6.19	194.5
2.10	37.5	2.51	52.9	2.92	68.2	3.33	86.5	3.74	102.0	4.15	117.5	4.56	133.0	4.97	148.5	5.38	164.0	5.79	179.5	6.20	195.0
2.11	37.9	2.52	53.2	2.93	68.6	3.34	87.0	3.75	102.5	4.16	118.0	4.57	133.5	4.98	149.0	5.39	164.5	5.80	180.0	6.21	195.5
2.12	38.2	2.53	53.6	2.94	69.0	3.35	87.5	3.76	103.0	4.17	118.5	4.58	134.0	4.99	149.5	5.40	165.0	5.81	180.5	6.22	196.0
2.13	38.6	2.54	54.0	2.95	69.4	3.36	88.0	3.77	103.5	4.18	119.0	4.59	134.5	5.00	150.0	5.41	165.5	5.82	181.0	6.23	196.5
2.14	39.0	2.55	54.4	2.96	69.7	3.37	88.5	3.78	104.0	4.19	119.5	4.60	135.0	5.01	150.5	5.42	166.0	5.83	181.5	6.24	197.0
2.15	39.4	2.56	54.7	2.97	70.1	3.38	89.0	3.79	104.5	4.20	120.0	4.61	135.5	5.02	151.0	5.43	166.5	5.84	182.0	6.25	197.5
2.16	39.7	2.57	55.1	2.98	70.5	3.39	89.5	3.80	105.0	4.21	120.5	4.62	136.0	5.03	151.5	5.44	167.0	5.85	182.5	6.26	198.0
2.17	40.1	2.58	55.5	2.99	70.9	3.40	90.0	3.81	105.5	4.22	121.0	4.63	136.5	5.04	152.0	5.45	167.5	5.86	183.0	6.27	198.5
2.18	40.5	2.59	55.9	3.00	71.2	3.41	90.5	3.82	106.0	4.23	121.5	4.64	137.0	5.05	152.5	5.46	168.0	5.87	183.5	6.28	199.0
2.19	40.9	2.60	56.2	3.01	71.6	3.42	91.0	3.83	106.5	4.24	122.0	4.65	137.5	5.06	153.0	5.47	168.5	5.88	184.0	6.29	199.5
2.20	41.2	2.61	56.6	3.02	72.0	3.43	91.5	3.84	107.0	4.25	122.5	4.66	138.0	5.07	153.5	5.48	169.0	5.89	184.5	6.30	200.0
2.21	41.6	2.62	57.0	3.03	72.4	3.44	92.0	3.85	107.5	4.26	123.0	4.67	138.5	5.08	154.0	5.49	169.5	5.90	185.0	6.31	200.5
2.22	42.0	2.63	57.4	3.04	72.7	3.45	92.5	3.86	108.0	4.27	123.5	4.68	139.0	5.09	154.5	5.50	170.0	5.91	185.5	6.32	201.0
2.23	42.4	2.64	57.7	3.05	73.1	3.46	93.0	3.87	108.5	4.28	124.0	4.69	139.5	5.10	155.0	5.51	170.5	5.92	186.0	6.33	201.5
2.24	42.7	2.65	58.1	3.06	73.5	3.47	93.5	3.88	109.0	4.29	124.5	4.70	140.0	5.11	155.5	5.52	171.0	5.93	186.5	6.34	202.0
2.25	43.1	2.66	58.5	3.07	73.9	3.48	94.0	3.89	109.5	4.30	125.0	4.71	140.5	5.12	156.0	5.53	171.5	5.94	187.0	6.35	202.5
2.26	43.5	2.67	58.9	3.08	74.2	3.49	94.5	3.90	110.0	4.31	125.5	4.72	141.0	5.13	156.5	5.54	172.0	5.95	187.5	6.36	203.0
2.27	43.9	2.68	59.2	3.09	74.6	3.50	95.0	3.91	110.5	4.32	126.0	4.73	141.5	5.14	157.0	5.55	172.5	5.96	188.0	6.37	203.5
2.28	44.2	2.69	59.6	3.10	75.0	3.51	95.5	3.92	111.0	4.33	126.5	4.74	142.0	5.15	157.5	5.56	173.0	5.97	188.5	6.38	204.0
2.29	44.6	2.70	60.0	3.11	75.5	3.52	96.0	3.93	111.5	4.34	127.0	4.75	142.5	5.16	158.0	5.57	173.5	5.98	189.0	6.39	204.5
2.30	45.0	2.71	60.4	3.12	76.0	3.53	96.5	3.94	112.0	4.35	127.5	4.76	143.0	5.17	158.5	5.58	174.0	5.99	189.5	6.40	205.0